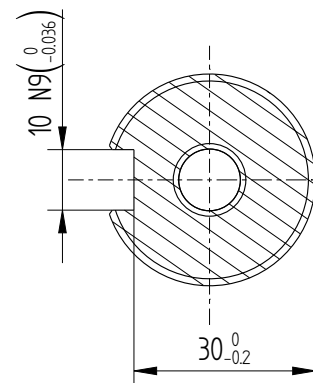
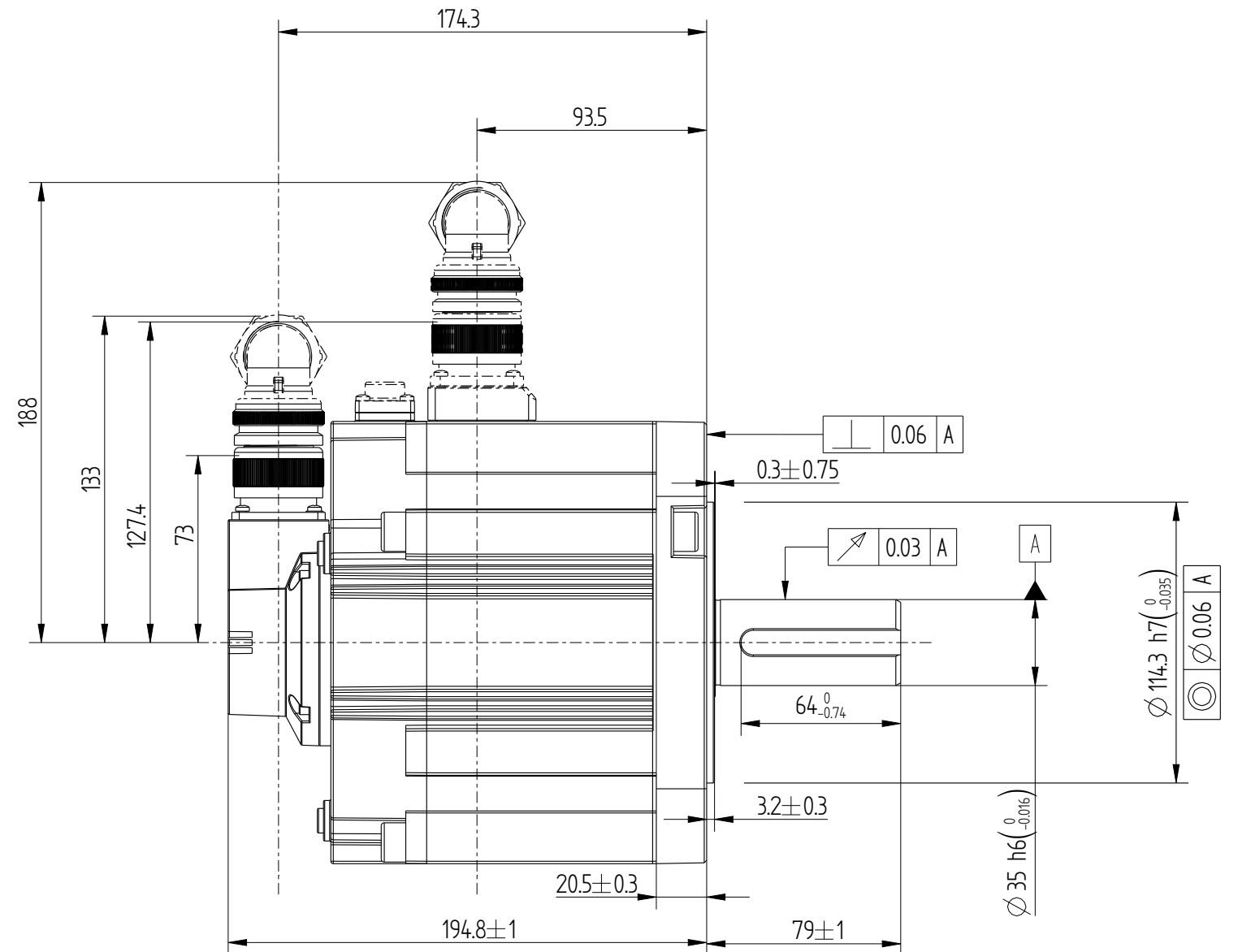
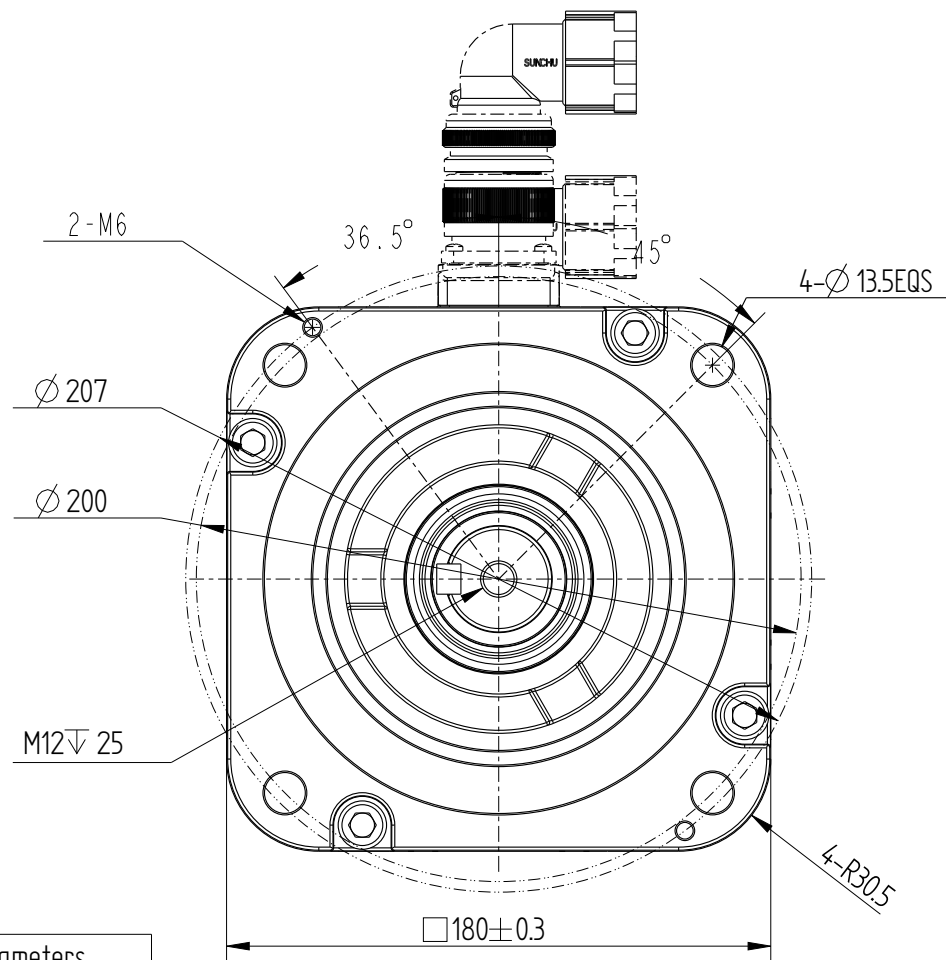
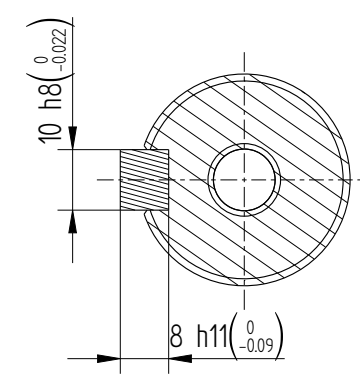


Amendment	Description

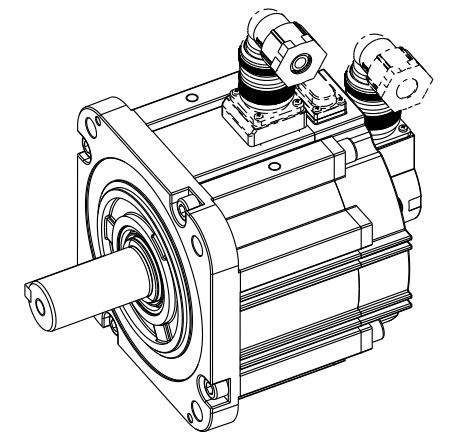
Unit: Millimeter (mm)



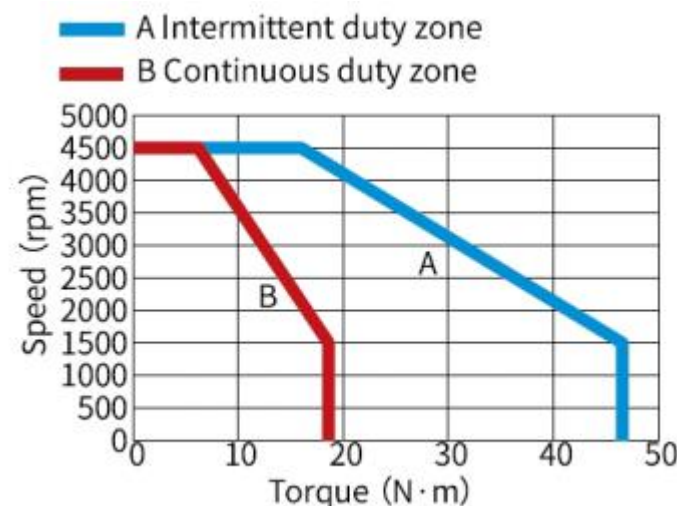
Dimension of shaft end

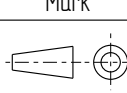


Dimension of shaft end with key



Basic function parameters	
Rated power kW	2.9
Rated voltage V	380
Rated current A	10.5
Peak current at rated speed A	29.75
Rated torque Nm	18.6
Peak torque at rated speed Nm	46.5
Rated speed rpm	1500
Max speed rpm	4500
Rotor inertia kg·cm ²	52.35±10%
Encoder resolution	23bit
insulation class	F(155)
Protection level	IP67
Static torque of brake Nm	≥50
Brake power supplyV	DC24±10%
Brake backlash°	≤1
duty cycle	S1
Radial load N	≤1470
Axial load N	≤490



				Motor Outline Drawing			01118014-WX	
B01	Replace	/	/					
Version	Change method	Change by	Date					
Design	/			/			Mark	
Check	/							
Craft	/							
Verify	/			Weight	Scale	Version	Page 1 of 1	
standardization	/			17.9kg	25	B01	Model	MS1H3-29C15□-A334R-INT
Approve	/							